



Year 10 Evening

Mr John Hibble

Deputy Principal (Teaching and Learning)

Wednesday, 26 May 2010



Year 11

- **Religion and Life**
- **Physical Recreation**
- **Five other courses**



When do we choose?

- **Week 10**
- **Start thinking now!**
- **Read booklet**



Courses

- **Two units each year, one per semester**
- **Stage 1 units are called 1A, 1B, ...**
- **Stage 2 units are called 2A, 2B, ...**
- **Stage 3 units are called 3A, 3B, ...**
- ***Exams at end of Year 12***



Courses

- **Either**

Year 11	Year 12
1A, 1B	1C, 1D

– Access Learning Pathway

- **Or**

Year 11	Year 12
2A, 2B	3A, 3B

– ATAR Pathway



Pathway

- **Access Learning Pathway**
 - No external exams
 - Include workplace learning and TAFE certificate
 - Access to both university and TAFE
 - Choose mainly Stage 1 courses



Pathway

- **ATAR Pathway:**
 - **External exams in at least 4 courses**
 - **Access to both university and TAFE**
 - **Choose at least 4 Stage 2 courses in Year 11**

Letter after semester exams



Grades

- **A Very High**
- **B High**
- **C Satisfactory**
- **D Limited**
- **E Inadequate**



Assessment

- **Year 11: internal**
 - *Grades depend on marks attained*
- **Year 12: internal + exam for Stage 2/3**
 - *Grades from internal assessment only*



Secondary Graduation

- **20 units over Years 11, 12**
- **List A and List B**
- **Average C grade in best 16 units**
- **C grade in English or Lit.**

→ *WACE*



TAFE

- **Non-competitive courses (70%)**
minimum entry requirements
- **Competitive courses (30%)**
selection criteria
- See website www.tafe.gov.au



TAFE

SELECTION CRITERIA:

- **School results** (up to 42 points)
- **Work experience** (up to 29 points)
- **Portfolio required for some courses**



Public University

- **Access Learning Pathway:**
 - Secondary graduation
 - Alternative entry programs
 - Curtin, Murdoch, Edith Cowan
 - Depends on grades achieved
 - Certificate courses and work experience advantageous



Public University

- **ATAR Pathway:**
 - **Secondary Graduation**
 - **Competence in English**
(Scaled mark of 50 at Stage 2 or 3)
 - **Sufficiently high ATAR**
 - **Prerequisites for some courses**
(Scaled mark of 50 at Stage 3)



ATAR Calculation

- **Combine school and exam marks 50:50**
- **Add highest 4 of these → TEA**
- **Convert TEA to ATAR (out of 100)**



Adjusting Marks

- **Moderated**
school differences
- **Standardized**
exam difficulty / spread of marks
- **Scaled**
course differences

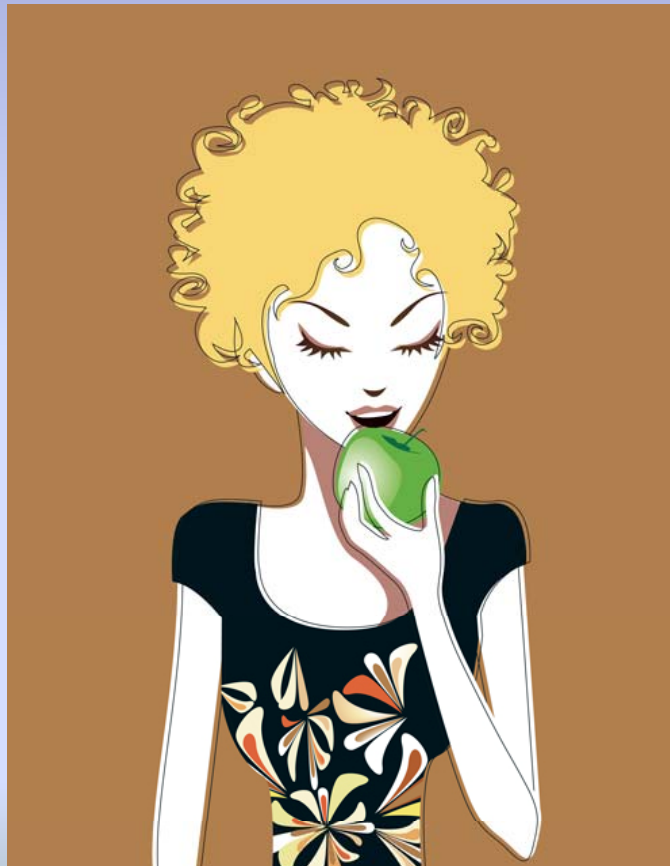


Adjusting Marks

- **Stage 3: plus 15 marks before final scaling**
- **Mathematics:**
 - **Plus 20 for Maths 3A/3B**
 - **Plus 30 for Maths 3C/3D**



Esmeralda





Esmeralda

- **Human Biological Science 3A/3B**
- **School mark = 69**
- **Moderated school mark = 67.31**
- **Standardized/Moderated = 66.08**
- **WACE exam mark = 60**
- **Standardized exam mark = 59.45**



Esmeralda

- **Combined school/exam mark = 62.77**
- **Add 15 for stage 3 = 77.77**
- **Scaled final mark = 65.19**



Esmeralda

Course	Final Scaled Mark
English 3A/3B	69.92
Mathematics 3A/3B	73.08
Human Biological Science 3A/3B	65.19
Geography 3A/3B	58.54
Visual Arts 3A/3B	69.43
Religion and Life 1C/1D	Grade Only
TEA	277.6
ATAR	90.0



Notre Dame

- **Secondary Graduation**
- **50 in English or Lit**
- **ATAR of 70 or higher**
- **Personal statement**
- **Referees**
- **Interview**
- **Alternative entry**



INSTEP

- **Innovative Skills, Training & Education Program**
- **Suitable for all TAFE aspirants**
- **Study 6 courses, including:**
 - RE, English, Workplace Lng, CAE
- **Spend one day each week out of school**



INSTEP

- **Need to register:** **11 August**
- **Info evening:** **25 August**
- **Applicants interviewed** **Terms 3, 4**



How Do I Choose?

- **Careers Unit in Health Ed**
- **Careers Day**
- **Talks from HOLAs**
- **Check uni preferred courses**
- **Check prerequisites (booklet)**



How Do I Choose?

- **Talk to staff**
- **Parent-Teacher Evening 23 June**
- **Pray!**
- **Likes and strengths**



Timeline

- **Initial choices Week 10, Term 2**
- **Grid**
- **Some may have to change a selection!**
- **Other changes Possible Term 4**



QUESTIONS?



Thank you!