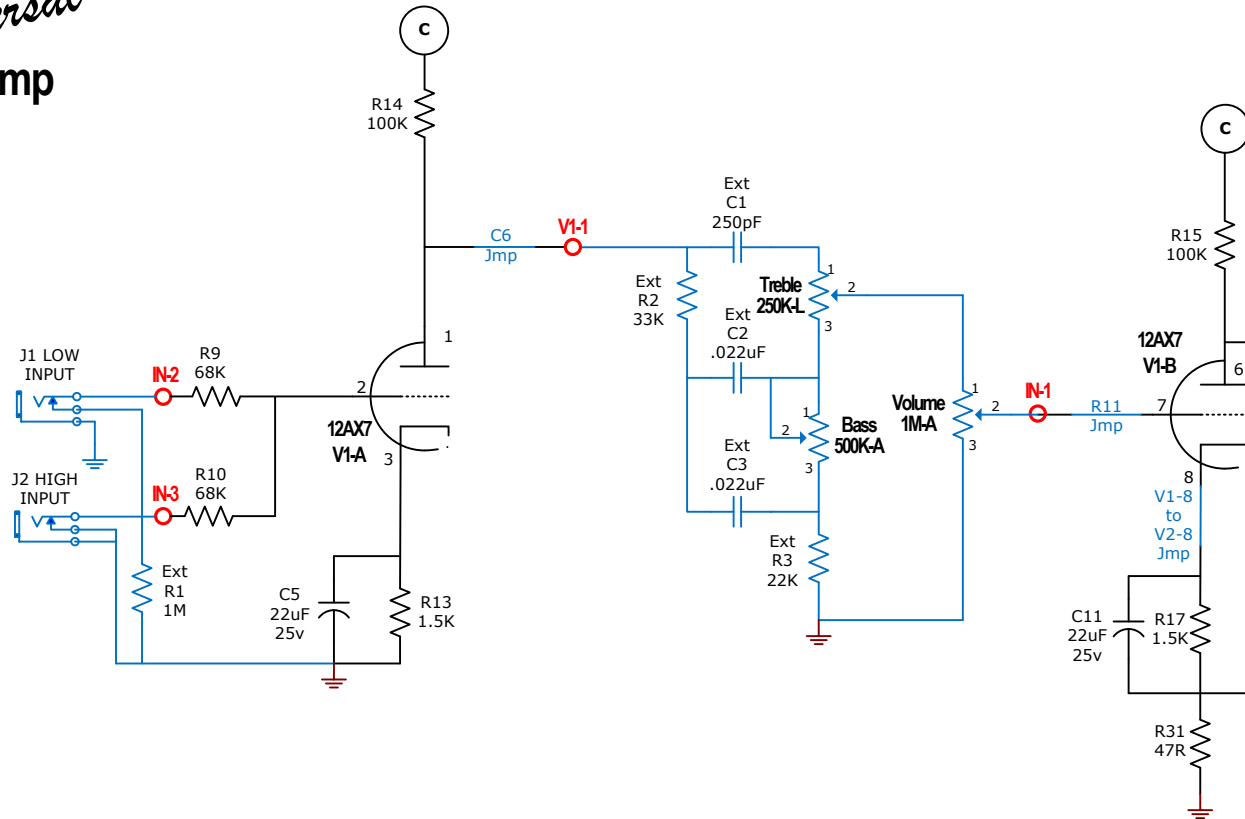
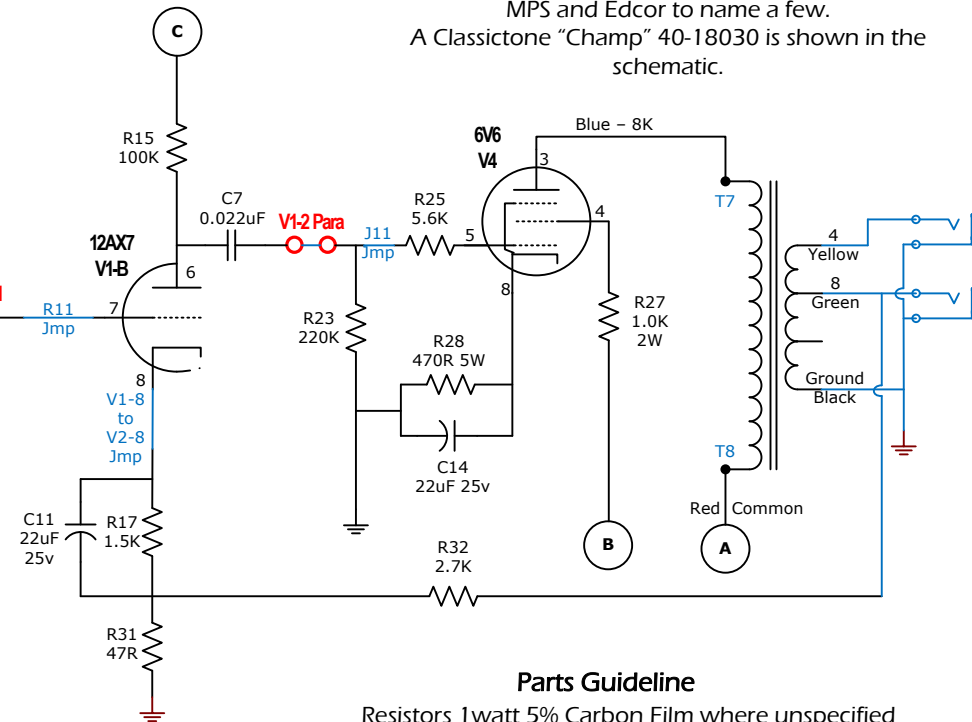


Universal Champ



Output Transformer

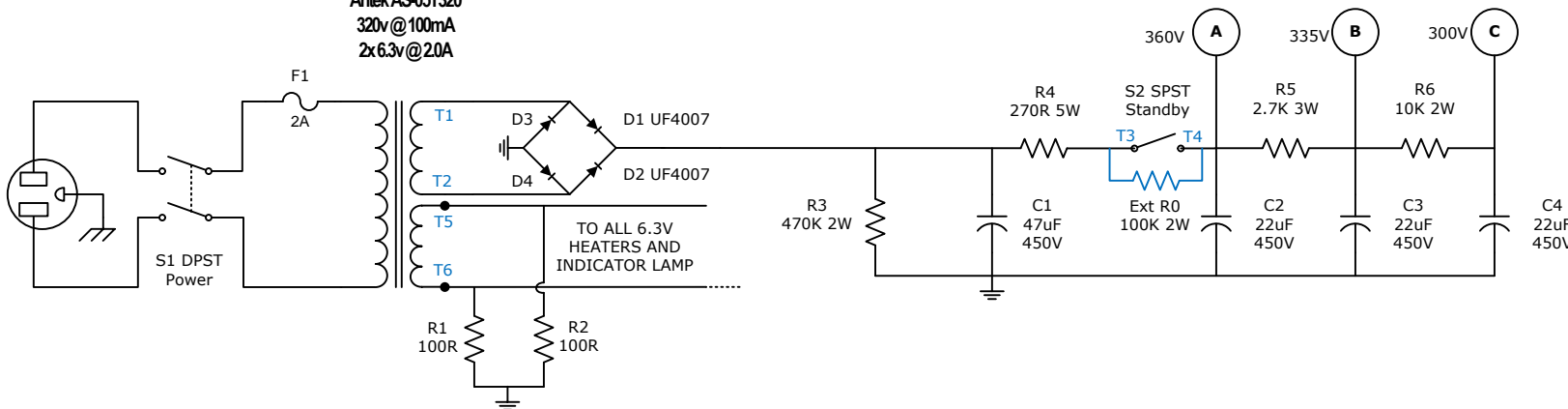
Vintage "Champ" style OTs of around 8K primary impedance provide a great authentic tone. There are numerous models from ClassicTone, Heyboer, MPS and Edcor to name a few. A ClassicTone "Champ" 40-18030 is shown in the schematic.



Parts Guideline

Resistors 1watt 5% Carbon Film where unspecified
 Power resistors metal oxide or wire wound
 Electrolytic Capacitor voltage as specified
 Other Capacitors 630v Polyester Film except Ext C1 - Silver Mica

Antek AS-05T320
 320v @ 100mA
 2x 6.3v @ 20A



PPWatt.com

Universal PCB

Variation	SE Champ
PCB Versions	V1.2
Date	04/01/2013
Author	Jamesrr