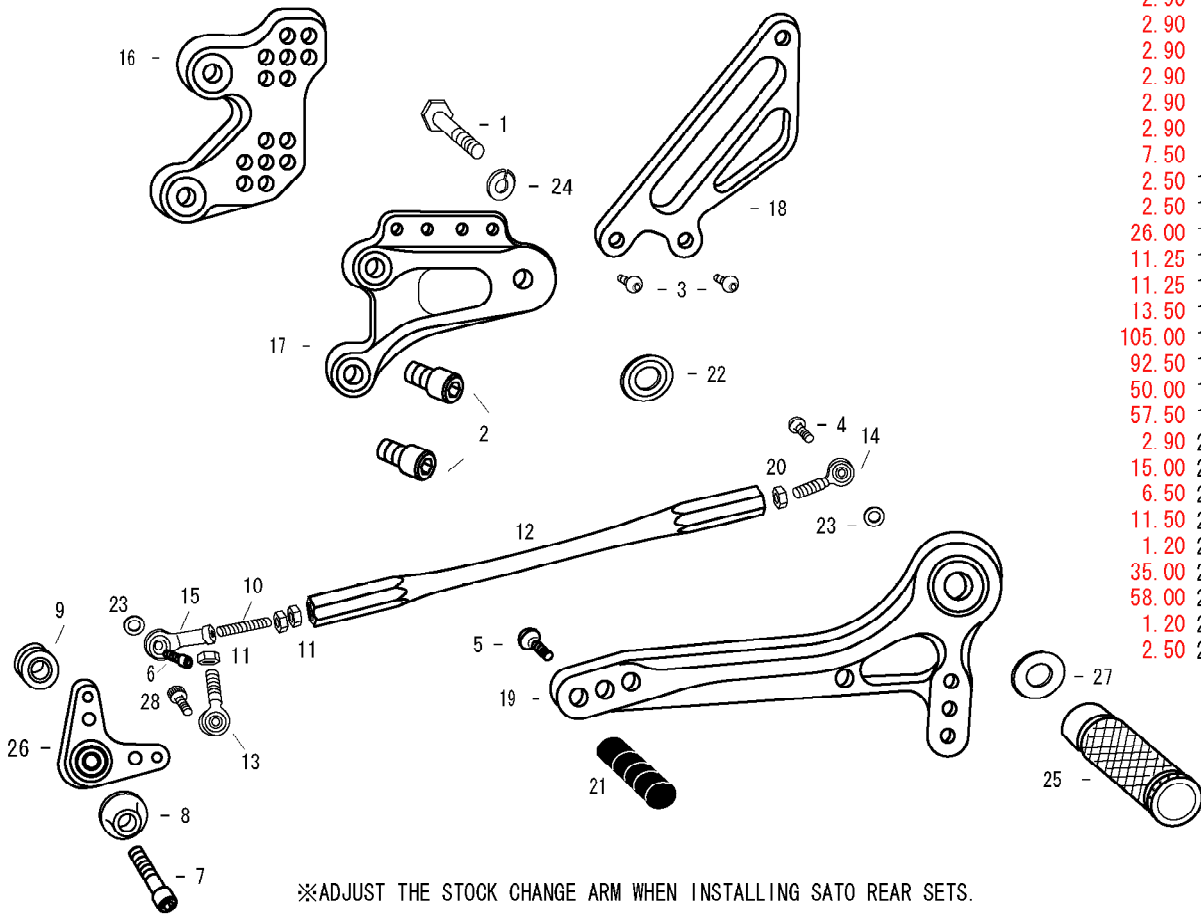


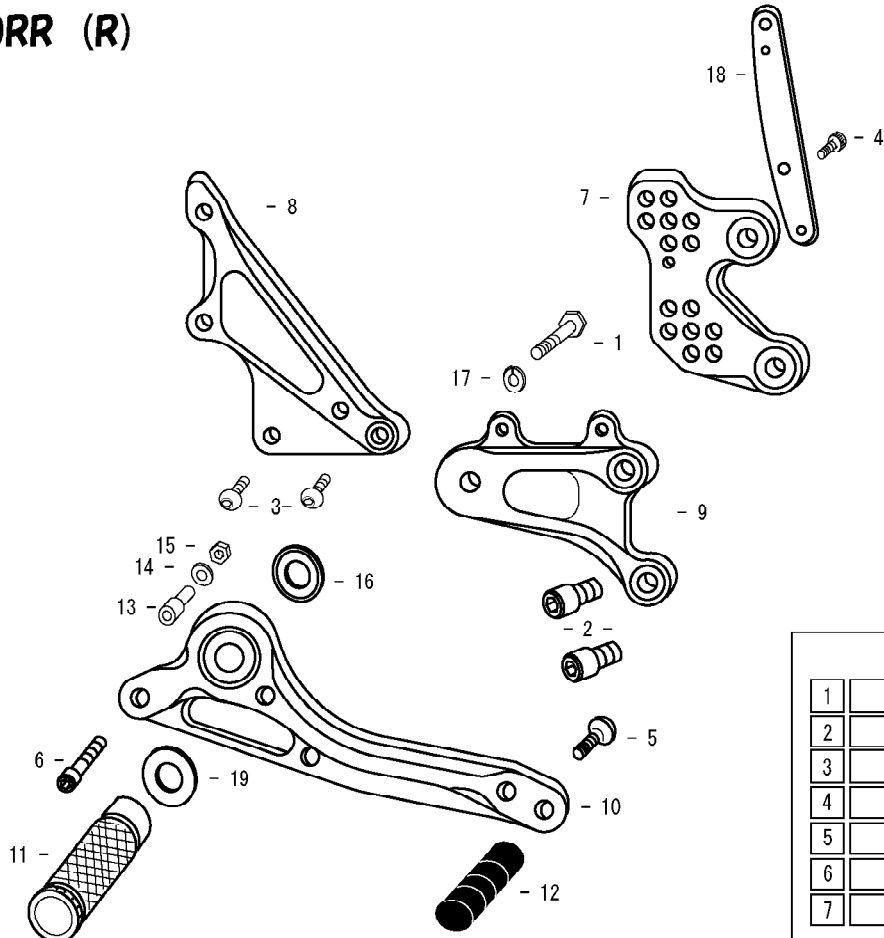
# CBR1000RR (L)



- 2.90 1. HEX BOLT M8×45mm ×1
- 2.90 2. SOCKET HEAD M8×15mm ×2
- 2.90 3. BUTTON HEAD M6×10mm ×2
- 2.90 4. BUTTON HEAD M6×20mm ×1
- 2.90 5. BUTTON HEAD M6×20mm ×1
- 2.90 6. SOCKET HEAD M6×20mm ×1
- 2.90 7. SOCKET HEAD M8×50mm ×1
- 2.90 8. BEARING BOLT COVER
- 7.50 9. FOOT PEG BEARING COLLAR20
- 2.50 10. STUD M6
- 2.50 11. JAM NUT M6 ×3
- 26.00 12. SHIFT ROD 190
- 11.25 13. MALE ROD END M6
- 11.25 14. REVERSE MALE ROD END M6
- 13.50 15. FEMALE ROD END M6
- 105.00 16. L BASE PLATE
- 92.50 17. L STEP PLATE
- 50.00 18. L HEEL GUARD (HG8)
- 57.50 19. SHIFT PEDAL 70 (SPD2)
- 2.90 20. REVERSE JAM NUT M6
- 15.00 21. PEDAL TIP
- 6.50 22. BEARING COLLAR
- 11.50 23. ROD END COLLAR ×2
- 1.20 24. SPLIT WASHER M8
- 35.00 25. FOOT PEG
- 58.00 26. SHIFT CRANK
- 1.20 27. WASHER M8
- 2.50 28. SOCKET HEAD M6×15mm ×1

※ADJUST THE STOCK CHANGE ARM WHEN INSTALLING SATO REAR SETS.

# CBR1000RR (R)



- 2.90 1. HEX BOLT M8×45mm ×1
- 2.90 2. SOCKET HEAD M8×15mm ×2
- 2.90 3. BUTTON HEAD M6×10mm ×2
- 2.50 4. SOCKET HEAD M6×15mm ×1
- 2.90 5. BUTTON HEAD M6×25mm ×1
- 2.50 6. SOCKET HEAD M6×40mm ×1
- 105.00 7. R BASE PLATE
- 65.50 8. MASTER STAY
- 92.50 9. R STEP PLATE
- 58.00 10. BRAKE PEDAL 130 (BPD7)
- 35.00 11. FOOT PEG
- 15.00 12. PEDAL TIP
- 15.50 13. COLLAR 22
- 0.85 14. WASHER M6
- 1.20 15. NUT M6
- 6.50 16. BEARING COLLAR
- 1.20 17. SPLIT WASHER M8
- 38.50 18. GUARD STAY
- 1.20 19. WASHER M8

POSITIONS		
1	0mm	10mm Up
2	10mm Back	10mm Up
3	0mm	20mm Up
4	10mm Back	20mm Up
5	20mm Back	20mm Up
6	10mm Back	30mm Up
7	20mm Back	30mm Up

All measurements are in relation to stock position (0 mm)