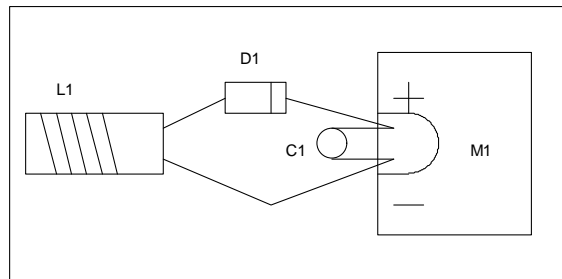


NOTES

D1 GERMANIUM DIODE OR SCHOTTKY DIODE TYPE BAT85

C1 CERAMIC

L1 20 TURNS 0.5MM DIAMETER WIRE, 15MM DIAMETER, 20MM LONG



TYPICAL CONSTRUCTION ON THE BACK OF A PLASTIC BOX LID

Title			RC TRANSMITTER FIELD STRENGTH METER		
Size	Number	Revision			
A4	149-01-1				
Date:	12-Jan-2004	Sheet	of		
File:	C:\My Documents\L\149-01-1.Sch	Drawn By:	LBC		