





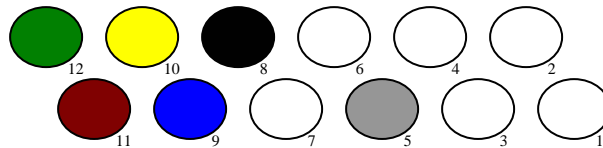
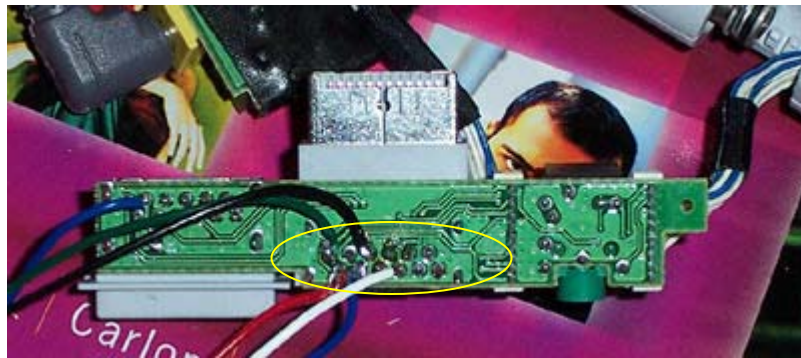


Serio :: Sony PSOne to VGA Wiring Diagram

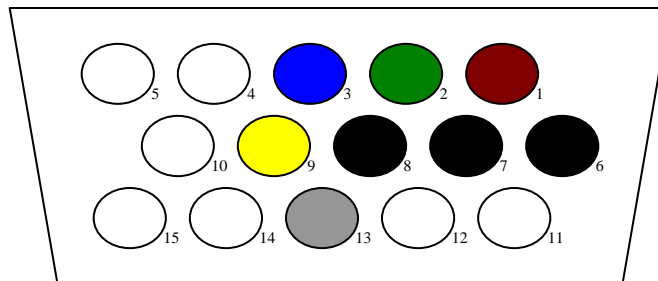
Colour Key	Description	VGA Pin	PSX Pin
	VGA Red	1	11
	VGA Green	2	12
	VGA Blue	3	9
	VGA Red, Green, Blue Grounds	6, 7, 8	8
	DCC	9	10
	Hsync / Csync	13	5

PSOne Header Wiring



PSOne Header Wiring (Solder Side)

VGA Header Wiring



VGA Pin Wiring (Solder Side)