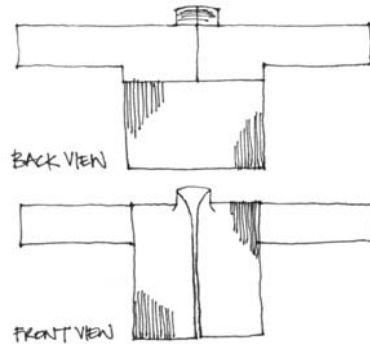


## Clementine's cardi

*A loose-fitting wrap cardigan, with kimono sleeves, based on something I spotted in a designer shop in Melbourne.*



### Yarn:

8 x 50g balls Rowan Felted Tweed

### Tension:

*Reverse Stst* 18st and 24 rows over 10cm with 4.5mm needles  
*K1P1 Ribbing* 26st and 24 rows over 10cm, unstretched with 4.5mm needles.

### Right front:

Cast on 67st

Proceed in *K1P1 ribbing* for 55cm finishing with a WS row (RS) Cast off 41st (26st remain)

Collar extension: Continue in *K1P1 ribbing* on remaining stitches for 18 rows

Cast off

### Left front:

As per Right Front, creating the collar extension on the other side.

### Lower back:

Cast on 134st

Proceed in *K1P1 ribbing* for 27cm

Cast off

### Right sleeve & upper back:

Cast on 55st (this will be the centre back seam)

Work in *reverse stst* for 60 rows ending with a RS (purl) row

At the start of the next row cast on 46st (101st total)

Work 3 rows

At start of next RS (purl) row cast off 9st (92st total)

Work 96 rows (40cm from cast off) or length required.

Make Left sleeve & upper back as per Right sleeve & upper back, reversing the shaping.

### To make up:

Block all pieces (don't stretch the ribbing), and piece together using mattress stitch or your preferred seaming technique. Refer to the layout drawing on page 2.

Sew sleeve pieces together along centre back seam. *Remember Reverse Stst is the right side!*

Attach lower back to upper back.

Sew together cast off edge of front collar extensions.

Laying pieces out flat sew fronts to shoulder and upper sleeves along shoulder seam. Work from centre back to shoulder corner using back stitch, and continue down along front of sleeve.

Fold the cardi along the shoulder seams, bringing the underarm and side seams together. Sew underarm and side seams.

**Now, find a cool pin and wrap it around yourself!**

### Tips for fit and variations:

*The garment is a loose-fitting size 14/16 and has a lot of give. Because the shaping is so simple, you can tailor the size and fit to suit you by measuring existing garments or your body size, and noting your desired garment measurements on the sketch. Based on the tension, calculate the number of stitches/rows required to achieve your desired garment dimensions, adding a couple of rows/stitches to each edge to allow for seaming.*

*To check the length of the sleeves you need, measure from your centre back to your desired cuff position. The sleeves are very wide because there is no shaping. You could taper them if you prefer.*

*You can knit in other yarn weights by first making tension squares, and adjusting the number of stitches and rows to achieve the overall dimensions shown on the sketch.*

