

# **FAUNA OF PERTH AIRPORT AND ENVIRONS**

John Dell and Andrew Huggett  
‘Wetlands to Wastelands’ seminar  
18 September 2004

# Fauna & fauna habitat values

- **Very high species richness** – top 3 sites in the metro (incls Jandakot Airport, Whiteman Pk)
  - 87 bird species (How & Dell 94, RAOU 96)
  - 20 reptiles (How & Dell 94, Tingay 94) – 1970 record of Western Swamp Tortoise
  - 8 frogs (How & Dell 94, Tingay 94)
  - 2 native mammals – Quenda & Echidna
  - 2 WA-endemic fish pops – Western Pygmy Perch, Western Minnow (only records in Perth Metro)

- **High wetland value** – one of top 6% of wetlands for breeding waterbirds in southwest WA (Bush Forever); contiguous swamp system
- **Other habitat values**
  - Complex mosaic of habitat types providing diverse array of feeding, breeding and refuge resources for fauna
  - Representative soil & plant communities (Bassendean Sands, eastern SCP flora mostly now gone (woodland uplands, wetlands, shrublands, heath))

- stepping stone' and landscape linkage values
- Research, education, Aboriginal, passive recreation values
- **Very high invertebrate species richness**
  - Munday Swamp – unusually rich & diverse invertebrate fauna (82 spp, several rare species – Bush Forever)

# Conservation significance – vertebrate fauna

## ■ Birds

- Populations of 9 decliners on SCP (Bush Forever listed)
- Feeding area for threatened Schedule 1 and EPBC Act-listed species – Carnaby's Black Cockatoo
- Seasonal food resources for waterbirds, honeyeaters, northern migrants

## ■ Mammals, reptiles & fish

- Quenda population
- Only known Perth Metro population of Crowned Snake; other declining species
- Significant populations of Western Minnow, WPPerch

## ■ National and international significance

- Listed in Register of National Estate, Directory of Important Aust Wetlands
- Criteria used: diversity, rarity, level of threat, scientific value, representativeness, coastal remnant vegetation communities (wetland, dampland, upland woodland, heath/shrublands)

# Declining bird species present



White-browed  
Scrubwren  
(CALM)



Not a Splendid Fairy-  
wren! (BBFW - CALM)



Inland  
Thornbill  
(CALM)

# Other locally significant birds



Golden Whistler  
(L&M Brooker)



Grey Butcherbird (CALM)



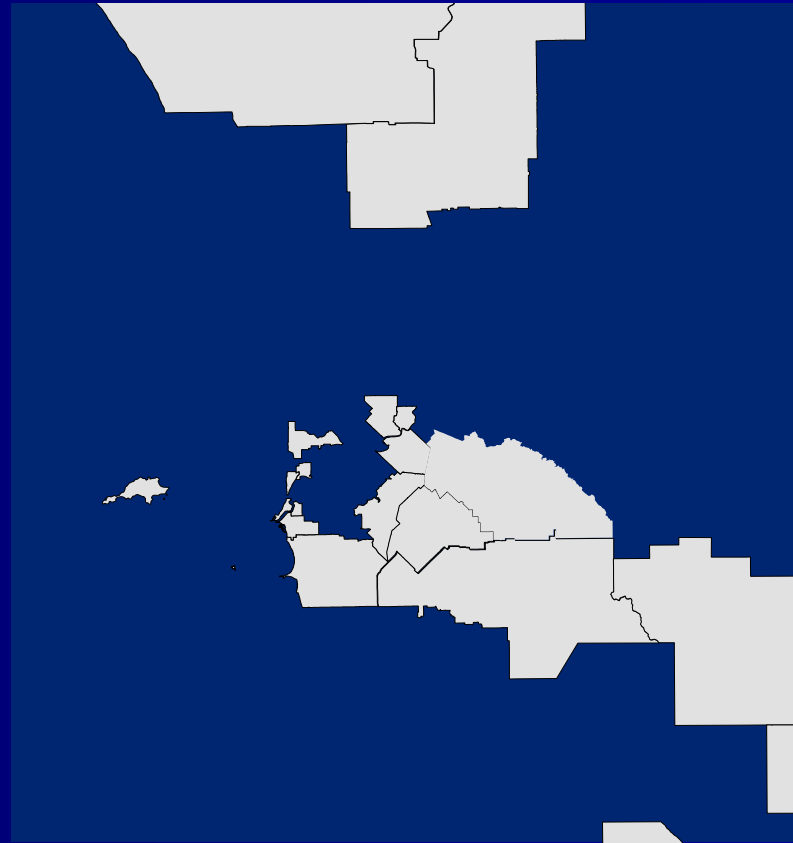
Rufous  
Whistler  
(CALM)



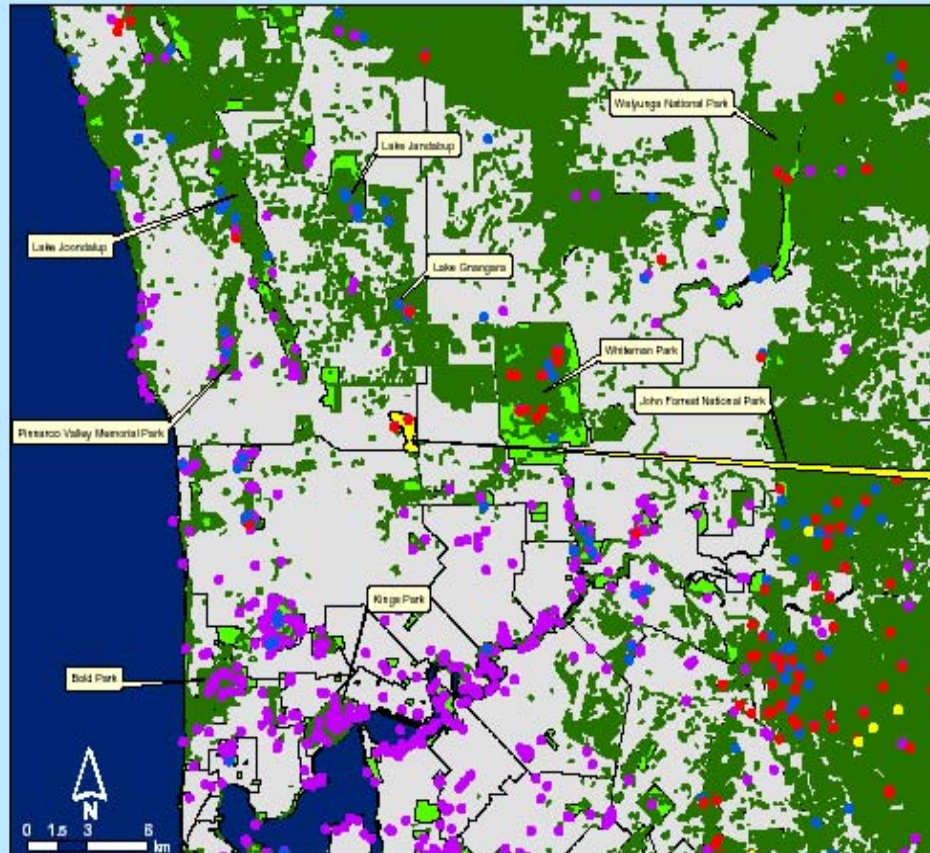
White-cheeked Honeyeater (CALM)

# Perth Metropolitan Region – importance of scale and context

- 28% native vegetation remains – compares well with other cities
- several declining birds now only in hills
- small remnants as 'stepping stones' – condition important
- potential for linkage – strengths in the north/north-east
- thinking 'outside the fence' – Airport bush as part of a larger interacting suite of ecosystem



# Koondoola Regional Bushland Reserve - a sub-regional perspective



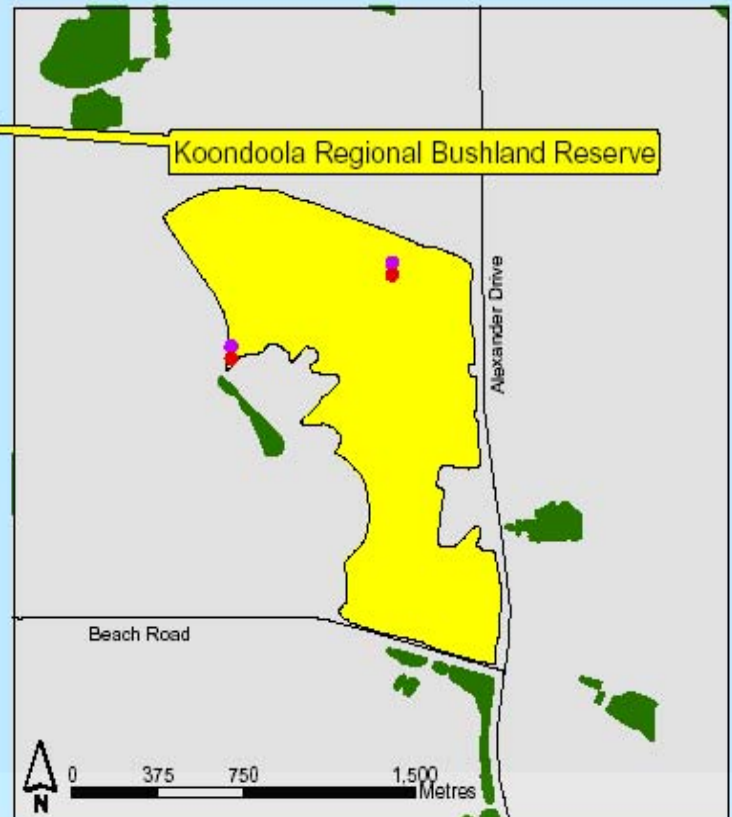
## Koondoola Regional Bushland Reserve

Approximate area - 136 ha

Dominant vegetation associations: *Bankesia attenuata* woodland with dunes, species-rich shrub understorey part of the uncommon Karakatta Central and South vegetation community on Spearwood-Bassendean sands. Stinkwood *Jacquotia strombergiana* is common in disturbed areas. *Melaleuca prostrata-Eucalyptus rudis* (Flooded Gum) seasonal wetland in south-east section. Jarrah *E. marginata* occur in the eastern sector.

Position in landscape: Koondoola Reserve is surrounded by housing, major roads and public utilities (water reservoirs, treatment plants, communication towers). It is approx 2 km from the nearest major urban bushland (Whiteman Park). Thus, it is an isolated bushland remnant within a highly urbanised landscape.

Land management issues: Wildfire control - several patches have been recently burnt in the northern sector; Weed management - mainly along access trails, reserve edges, highly disturbed parts; Control of exotic animals - cats, dogs, foxes, black rat, house mouse are common; Human access - people walking dogs/disturbing wildlife, riding horses and motorcycles, dumping rubbish, etc.



## Legend

- Western Yellow Robin
- Western Thornbill
- Splendid Fairy-wren
- Singing Honeyeater
- Parks and recreation
- Bushland
- Koondoola Regional Bushland Reserve

Map created by Ellen Parsons, CSIRO Sustainable Ecosystems  
Spatial bushland and bushland data provided by The Department of Planning and Infrastructure  
Flora and fauna data provided by Birds Australia, (B of Alice II)  
Spatial land data provided by Birds Australia, (B of Alice II)  
Information also provided by Birds Australia (BIA).